

Towns Fund Update

11th June

Overview Committee



Sutton on Sea Colonnade

A redevelopment of the colonnade to create a 3 landmark buildings including a café, exhibition spaces, beach huts and overnight accommodation.











Colonnade Key Points

- On track for Spring 2025 opening
- Pool also being upgraded
- Lodges scheme to be market tested
- Operator to be market tested
- Name to be agreed



Mablethorpe Leisure and Learning Hub

A new purpose built leisure centre and digital learning complex.









The image shows the East Lindsey District Council logo in the top left corner. Below it is a list of key points for the Station Leisure and Learning Centre. The list is as follows:

Station Leisure and Learning Centre Key Points

- All progressed smoothly
- Opening scheduled for mid-July
- First public swimming pool for 20/30 years

The bottom of the page features a decorative graphic with wavy lines in shades of yellow, green, and blue.



Campus For Future Living

A base to position Mablethorpe as the centre of a new cluster of health and care related jobs through the development and testing of medi-tech applications, continuing professional development of clinicians, and both clinical and non-clinical medical placements.







Mobi HubKey Points

- The external elements of the build are now complete
- Negotiations with an operator are now at an advanced stage
- Once in place, the internals will then be finalised

Mobi-Hub

A multi-modal and functional mobility facility for residents and visitors in Mablethorpe for more frequent bus services and an upgraded infrastructure, including new and upgraded cycle and walk-ways.



Mobi Hub Key Points

- 2 stage scheme with second phase now being deferred following the transfer of Towns Funds Funding from this project to the Campus for Future Living
- Phase 1 is about moving Grayscroft from existing site to purpose build depot out of Town Centre
- Negotiations with Grayscroft are now at an advanced stage
- Report to agree land transfer going to Exec Board on 8th July with Planning scheduled for Autumn
- Start on Site is scheduled for Feb/Mar 2025 with completion in Jan 2026



Cultural Skegness

A digital and learning centre, building illuminations, and repurposing and extending the existing Embassy Theatre







East Lindsey
DISTRICT COUNCIL

Cultural Skegness/Embassy Theatre

- Mellors Group now pulled out of part of scheme and withdrawn match funding
- Discussions ongoing with Arts Council over transfer of funds to ELDC, but outcome expected post General Election
- Could complete with use of own funds if required

The slide features the East Lindsey District Council logo at the top left. Below the logo is the title 'Cultural Skegness/Embassy Theatre' in bold. Underneath the title is a bulleted list of three items. The bottom of the slide has a decorative graphic consisting of several overlapping, wavy bands in shades of yellow, green, and blue.



Skegness Foreshore

The redevelopment of the area around the Southern Boating Lake and former Southern Bowling Greens. The aim of the project is to enhance the visitor offer, extend the season and support the night-time economy through new investment on arts, recreation and culture on two under-utilised sites in line with the principles of the Skegness Foreshore Masterplan



Eddisons Incorporating Banks Long & Co

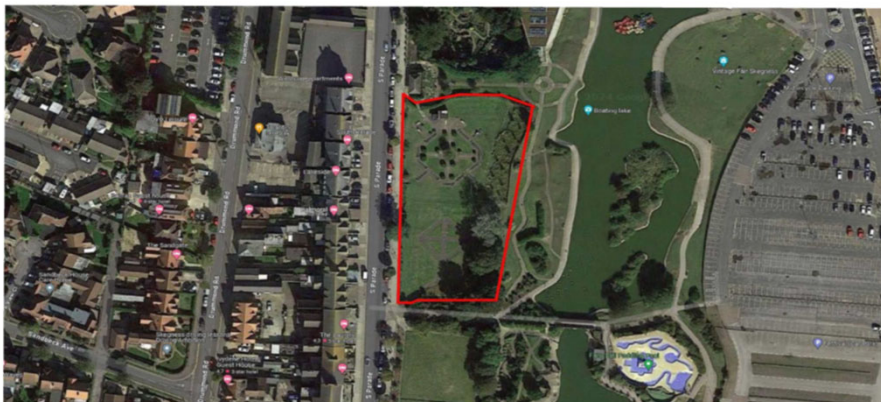
OVERVIEW


DESCRIPTION

LOCATION

IMAGES

PLANS






East Lindsey
 DISTRICT COUNCIL

Eddisons Incorporating Banks Long & Co

OVERVIEW DESCRIPTION LOCATION IMAGES PLANS



Hotel Development Site, South Parade, Foreshore, Skegness,
 PE25 2UB

Eddisons Incorporating Banks Long & Co



East Lindsey
 DISTRICT COUNCIL

Skegness Foreshore

- Only one of four lots received offers
- Travelodge/Starbucks work commenced in early June with completion scheduled for Summer 2025
- Will go back to market to re promote existing lots with anchor tenant in place