



Humber 2100+

ELDC Planning Policy Committee

Thursday 27th March

Helen Todd – Humber Strategic Manager



Agenda

- Humber 2100+ background
- Step 1 outputs
 - Approach
 - Evidence
 - Collaboration
- Endorsement status
- Discussion and questions



Humber context



Around 500,000 people



More than 200,000 properties



Around 14,000 businesses



Chemicals & manufacturing industry



Road, rail and energy infrastructure



UK's largest port complex (by tonnage)



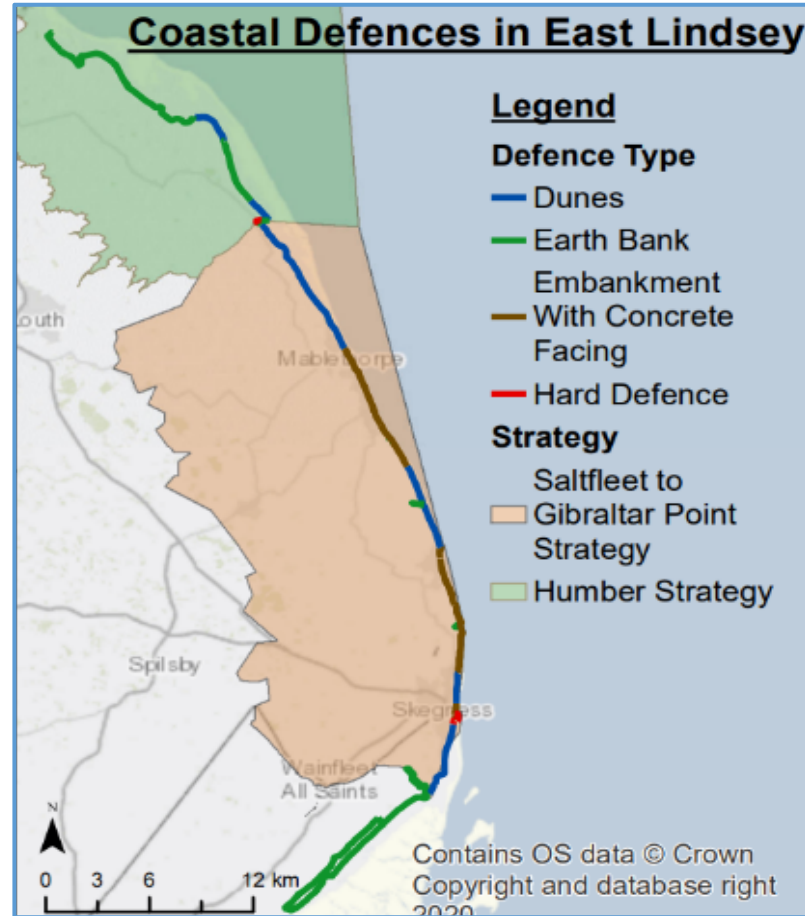
Internationally important habitats



120,000 hectares of agricultural land



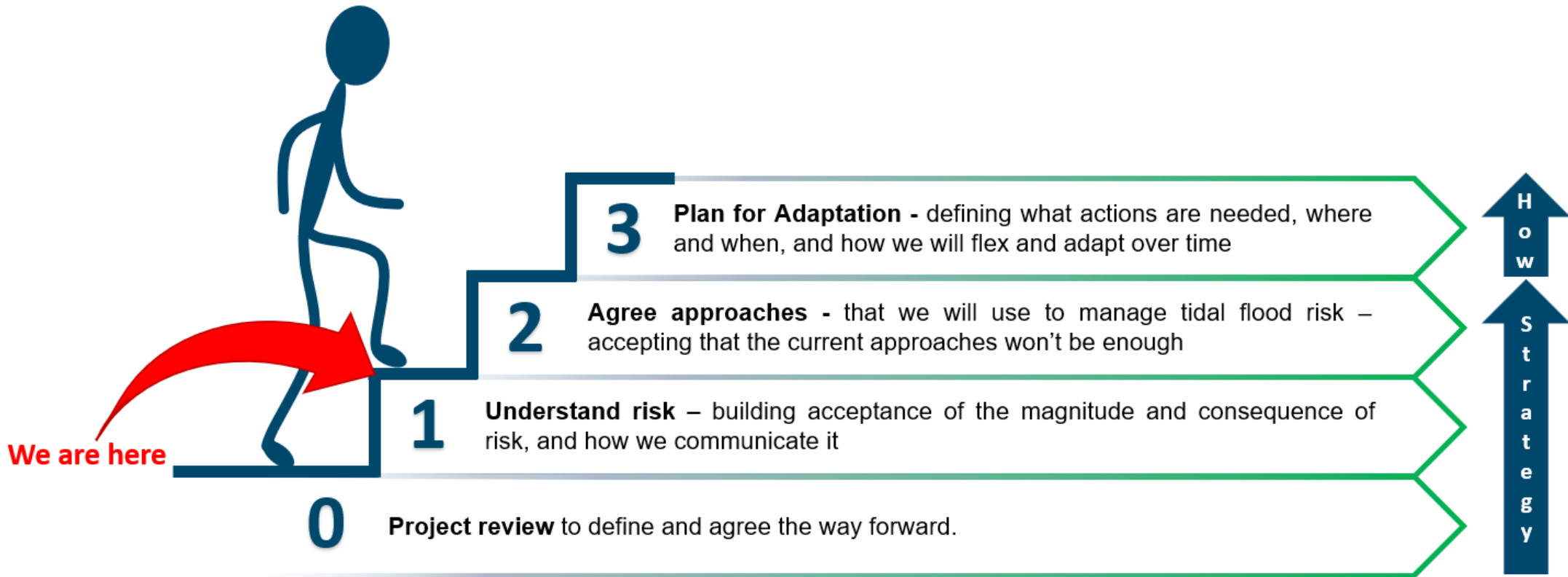
How is tidal risk currently managed?



- Overall steer provided by the Flamborough Head to Gibraltar Point Shoreline Management Plan
- Detailed direction set by:
 - Saltfleet to Gibraltar Point Strategy
 - Humber Strategy (2008)
- Risk reduced by network of existing defences



Stepped Approach



Step 1 Objectives

- A strategic scale understanding of what is at tidal risk, both now and in the future
- A strategic scale understanding of what would happen if we were to continue with the current approach
- Evidence to show how flood risk changes at different time horizons to help us understand the pace of adaptation or change that will be needed.
- A strategic scale assessment of indicative costs for providing defence improvements
- An acceptance of the future risk and an agreed way to communicate this risk

By the end of Step 1 we will have agreed, as a partnership, on a common understanding and acceptance of the scale and consequences of flood risk, both now and in the future



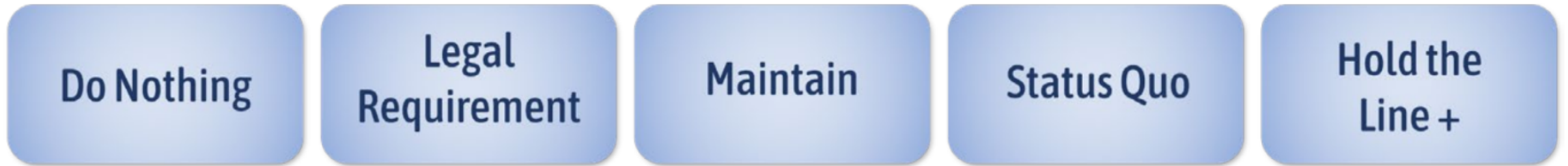
Step 1 Summary of Evidence

- Maps of both present and future flood risk, under different conditions
- Flood Damage Assessment
- Economic, Social, Environmental Impacts of flood risk
- Costs – financial & carbon
- Spatial constraints
- Implications of the changing flood risk



Developing the picture of Future Risk:

Five 'Future Baselines'



Three different time epochs – future risk (not all baselines run at each time epoch)



Step 1 outputs – for endorsement



Step 1 Endorsement Report

Step 1 Endorsement Pack



Step 1 Evidence Pack



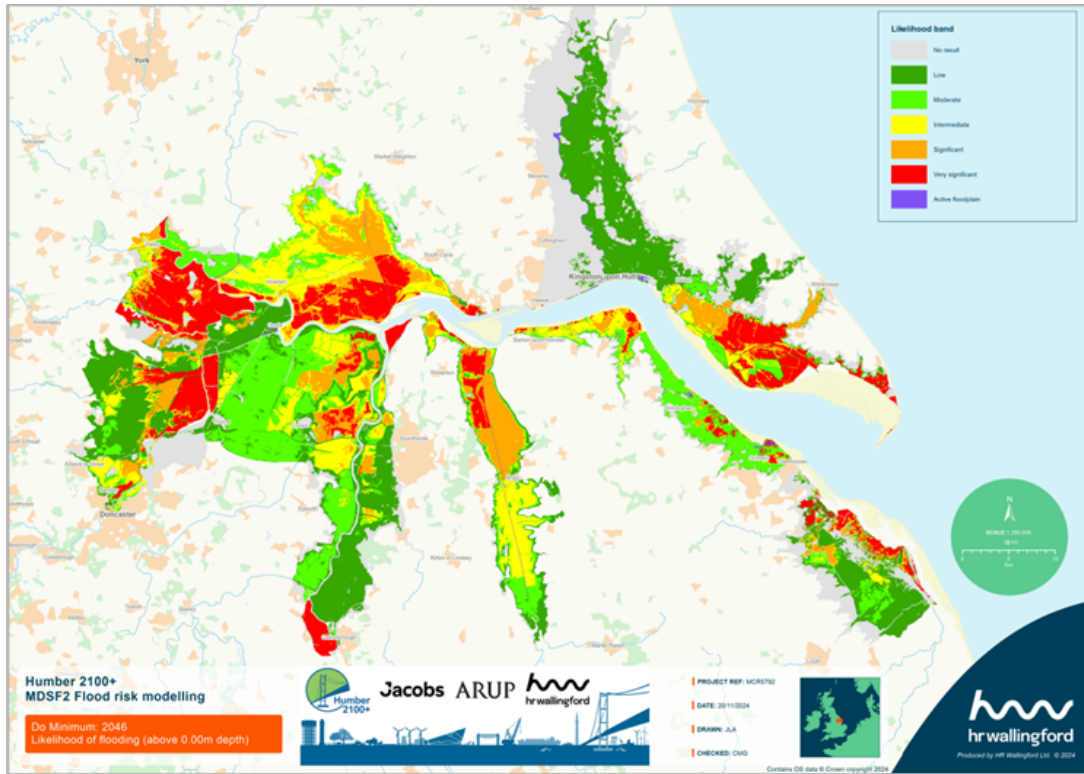
Supporting Resources

Additional Materials

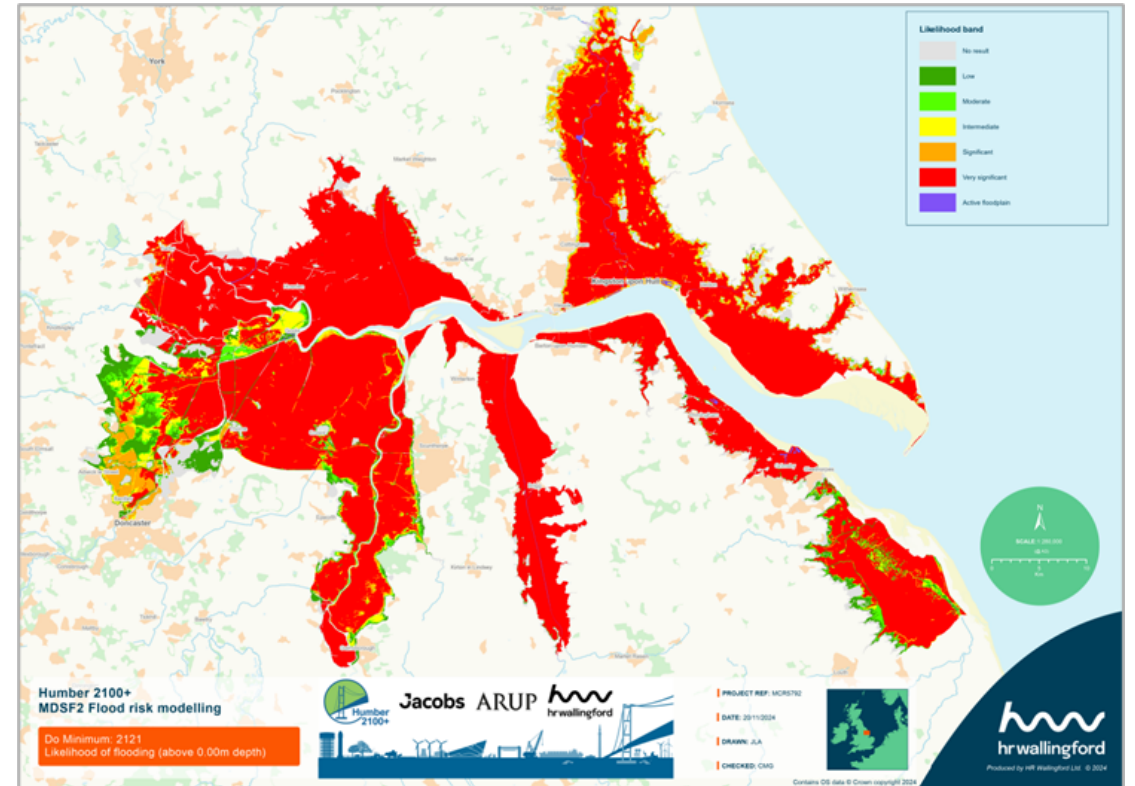


Public Facing Materials
(Summer 2025 onwards)

Likelihood maps



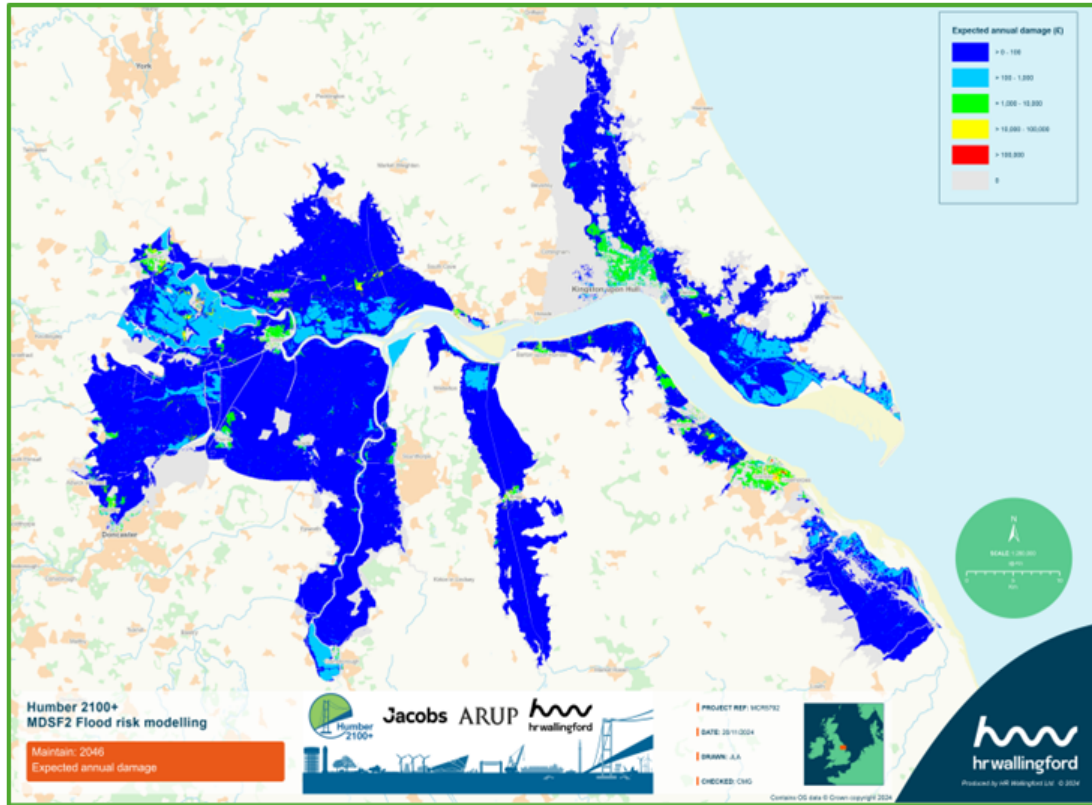
Maintain - 2046



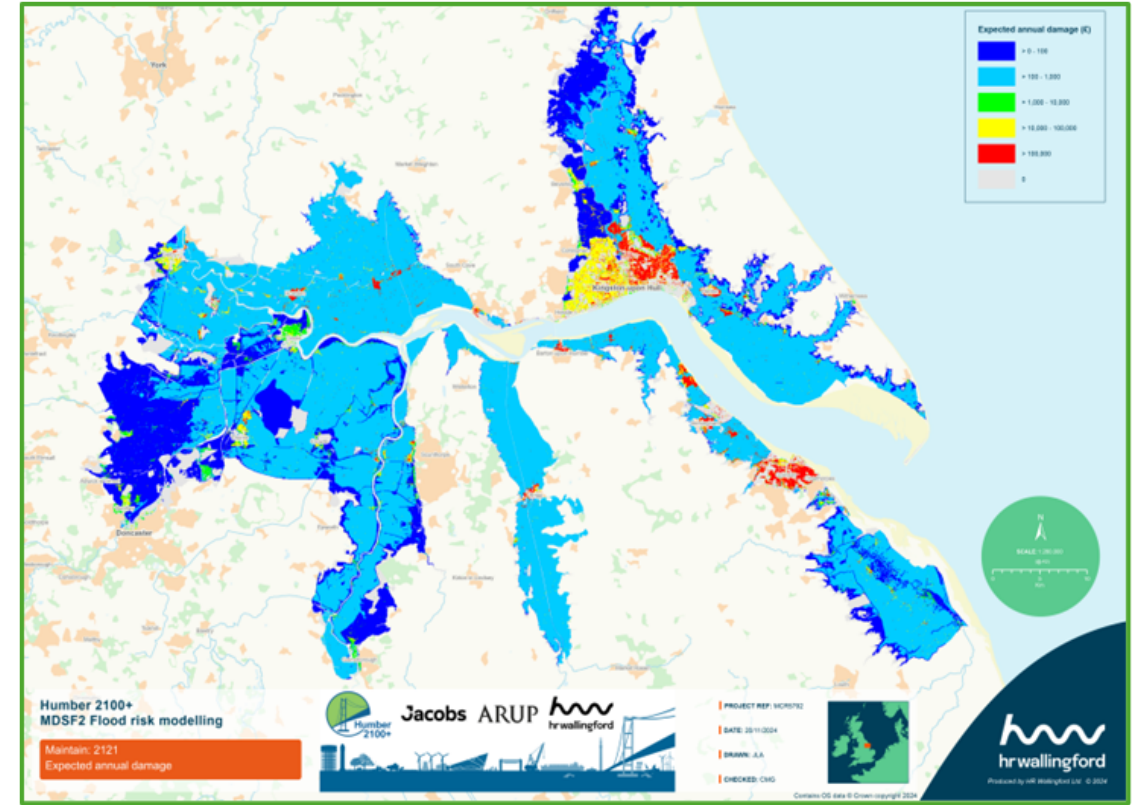
Maintain - 2121



Risk maps



Maintain - 2046



Maintain - 2121



Sustainability Appraisal

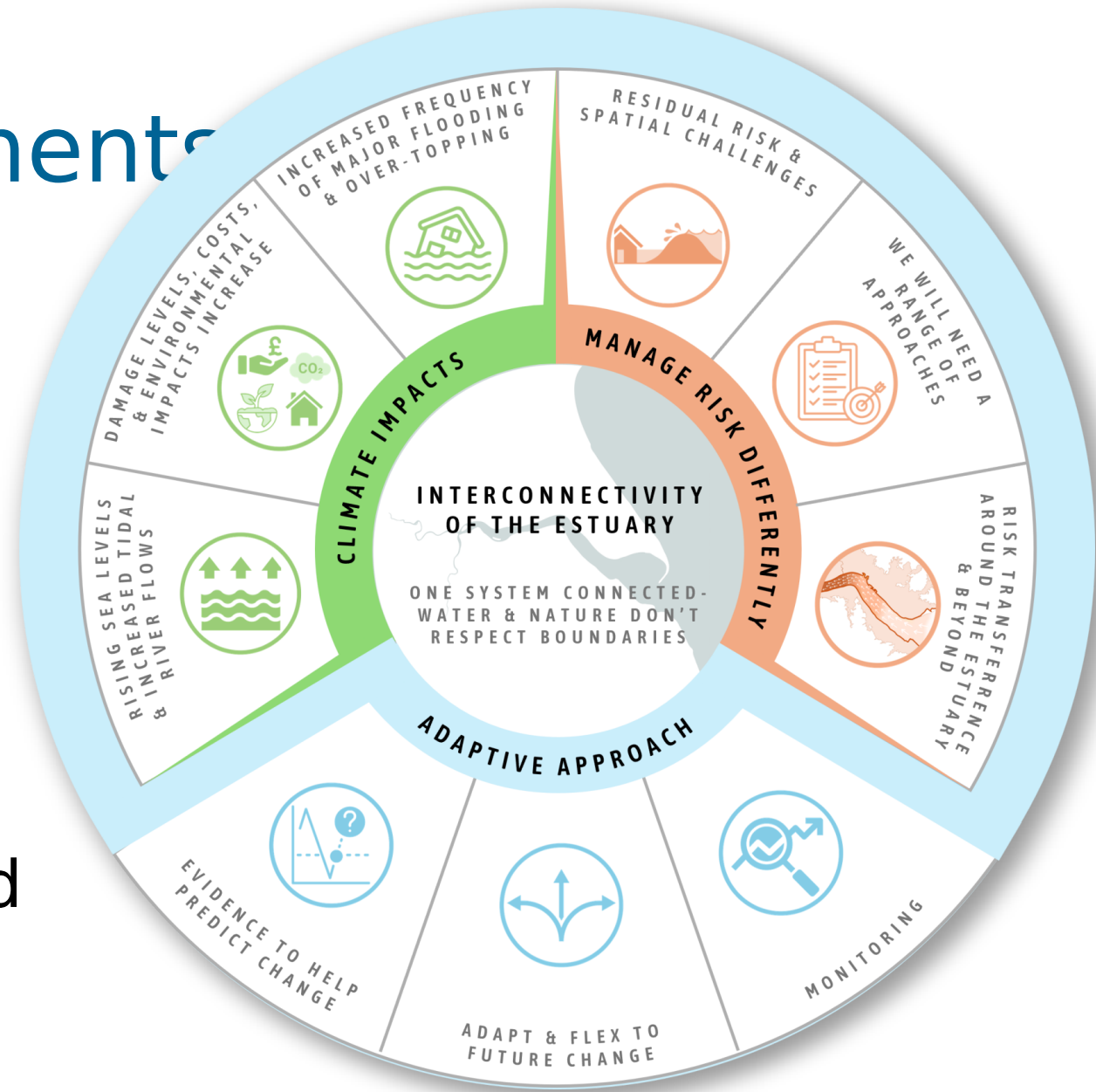
- Sustainability appraisal scoping report addendum has been produced
- Gives us a qualitative picture of the potential impacts of each baseline, alongside the quantitative impact described in the economic damages



Implications Statements

- Climate impacts
- Managing risk differently
- Adaptive approach

The evidence shows the estuary is an interconnected system.



Endorsement Status

- Held joint Programme Board and Elected Members Forum at end of January to commence the endorsement process
- On-going dialogue within all partners between officer, directors and portfolio holders
- Programme Board 20th March 25
- Final confirmation to follow



Next steps

- Continued partnership working
- Developing agreed messaging for wider sharing in the autumn
- Preparation for Step 2
- Use of our evidence base to inform current and future projects



Questions and discussion

